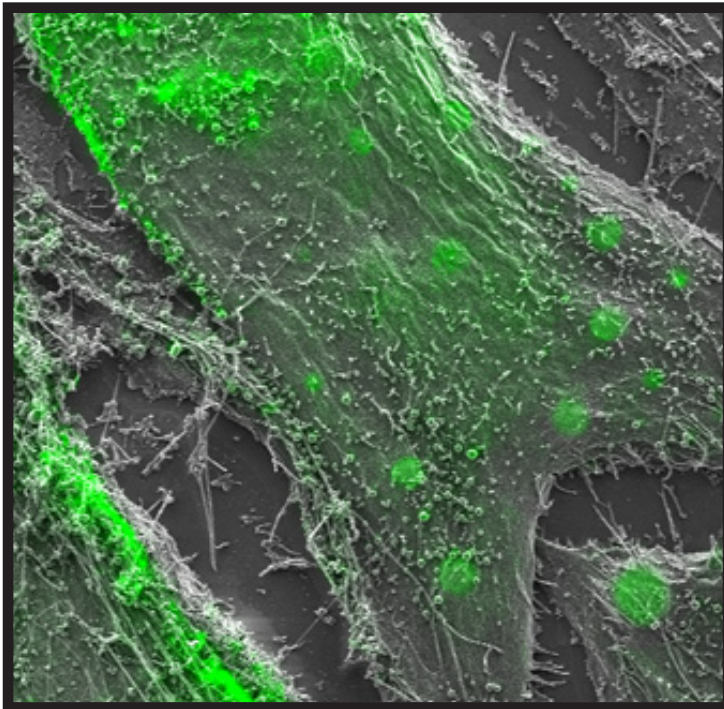


# Correlative Microscopy

Bridging the Micro and Nano Worlds



Correlative microscopy combines light microscope images and scanning electron microscope images of the same region, linking functional and dynamic specimen information with ultra-structural details.

**When: Wednesday, November 9, 2011 at 10:30 am**

**Where: Forschheimer Building, Room F-614**

**Speakers: Jerry Lehman & Susan Lai of Carl Zeiss Microscopy, LLC**

**Topic: Correlative Microscopy - Merging the capabilities of the light and electron microscopes. Presenting tools available at the Analytical Imaging Facility.**